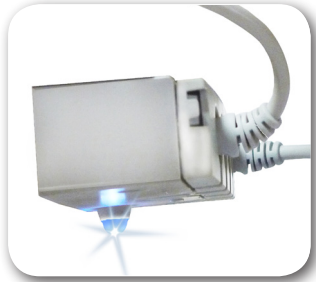


4000 MARK II SERIES BED

ALRICK



UnderBed Lighting



150mm Anti-Static Castors



Backlit Handset



- ✔ TESTED TO 1000KG
- ✔ AUSTRALIAN STANDARDS

- Electric Hi/Low
- Electric Auto Regression Backrest
- Electric Kneebend
- Electric Forward & Reverse Trendelenburg
- SWL 250KG
- CPR Release
- Battery Backup
- 4 Corner Buffers
- Minimum Height - 390mm
- Maximum Height - 830mm
- Trendelenburg - 14 degrees
- ACO Attendant Control Panel
- Under Bed Lighting Feature
- Handset with Background Light
- Overall Width (including Buffers) - 1014mm
- Overall Length (including Buffers) - 2170mm
- Sleeping Surface - 2000mm x 870mm
- Anti-Static 150mm Twin Wheel Central Locking Castors



The Alrick 4000 Mark II Series is an improved upmarket design with innovative features incorporated including: light moulded head & foot boards designed for rapid removal for immediate patient access; an underbed light to reduce the risk of falling accidents; and a backlit handset for visibility and usage at night, or in dim conditions. This model has been independently tested and complies with Australian standards.

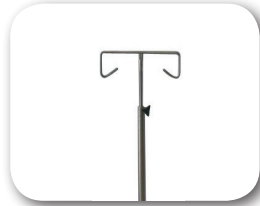
ACCESSORIES AVAILABLE TO SUIT 4000 MARK II



400HR Horizontal Rails



Self Help Pole



I.V. Pole



Padded Side Rail Protectors



OverBed Table

OPTIONS AVAILABLE TO SUIT 4000 MARK II



Pull Out Extension

HEAD AND FOOT BOARD OPTIONS FOR 4000 MARK II



Sculpted Moulded Style



Aluminium Trimmed Crescent Style

** Most head and foot board styles are available in a range of colours on request.*



DISTRIBUTOR:

Email sales@alrick.com.au for your closest distributor